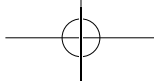




THANK YOU FOR YOUR INSTALLATION USE



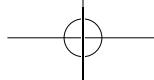
- SHOWER MIXER
- BASIN MIXER
- KITCHEN MIXER



CONTENTS

Installation Guide

Installation diagram



PRECAUTIONS BEFORE FAUCET INSTALLATION

Dear user:

Thank you for purchasing our products, so that you can easily install and use this product
At the same time, enjoy the quality service we provide for you. Please read this

Installation and use guide:

1. Installation method

1. Before installing the product, remove the foreign matters in the water pipe and supply water The installation of pipes must be strictly subject to the following requirements:

2. Fix G1/2 "to G3/4" zigzag foot Check the wall (G1/2 "to G3/4")
Whether the foot is balanced (see Figure 1):

3. Fix the faucet on the table top and porcelain basin, or fix it on the wall with wall nuts.
Water inlet of faucet Connect with the water supply pipe (please make sure that the left water inlet is hot water and the right water inlet is cold water)

4. In order to enable users to install this product successfully and achieve the best use effect, it is recommended to employ skilled technicians for correct installation.

2. Use and maintenance

1. If the water outlet flow is found to be insufficient during use, please check whether the water pressure from the water outlet is normal (water pressure 0.3MPaThe effect is best); Then check whether there are sundries on the core of the faucet and the filter screen at the connection between the hose and the angle valveBlockage; If blocking is found, please remove the nozzle core for cleaning:

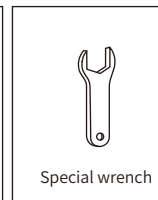
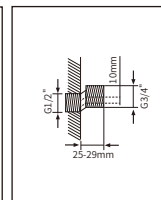
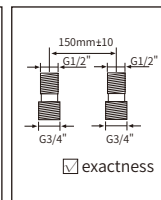
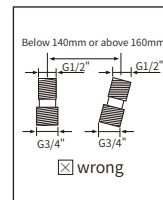
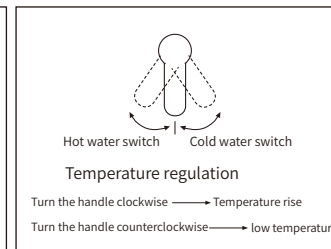
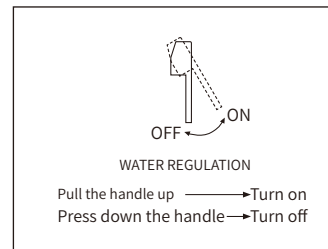
2. Please use clean water and soft cloth, solid car wax or water wax to remove surface dirt. Do not use any abrasiveUse articles and detergent with acid and strong alkaline to wash chrome plated surface (attached figure), otherwise it will be seriously scratchedAnd corrode the product surface, seriously damage the product finish:

3. After each cleaning or use; Please dry the surface with a dry cotton cloth. Restore the original luster of the product:

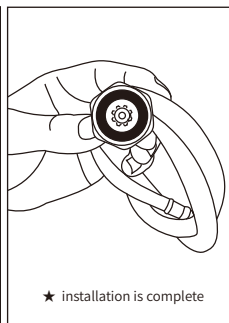
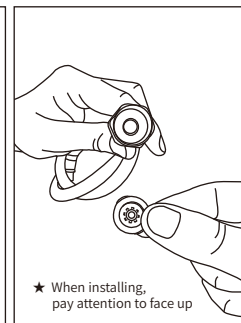
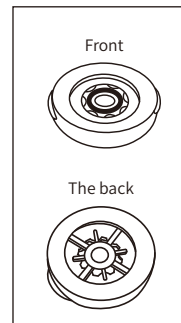
4. Please pay attention to the red and blue signs on the handle of the faucet during installation and use. The left red represents the hot water end, and the right Blue represents cold water end

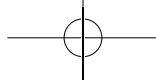
5. After installation, the installer should return the instructions and accessories to the customer and keep the instructions properlyKeep it well for maintenance of this product.

6. Water temperature control and handle opening mode of faucet:

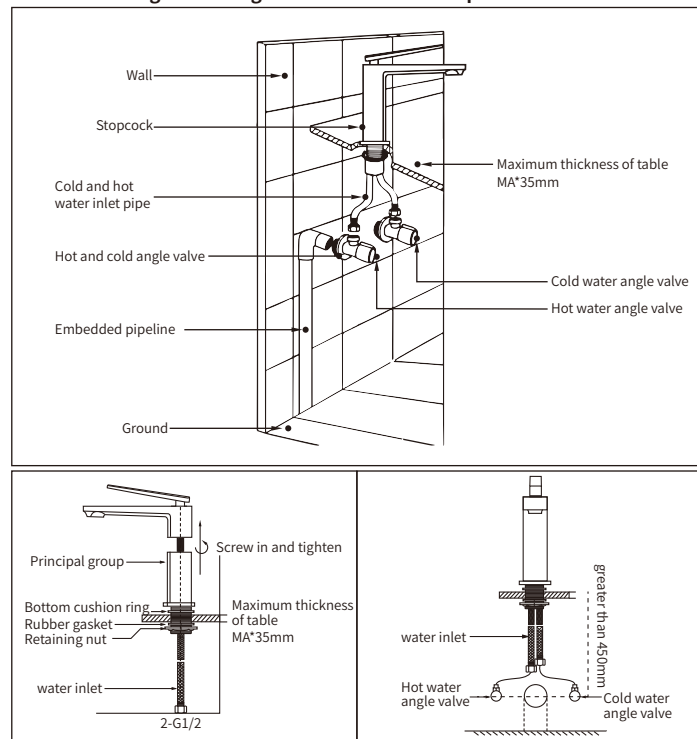


Installation method of water-saving sheet





Installation diagram of single-hole cold and hot tap



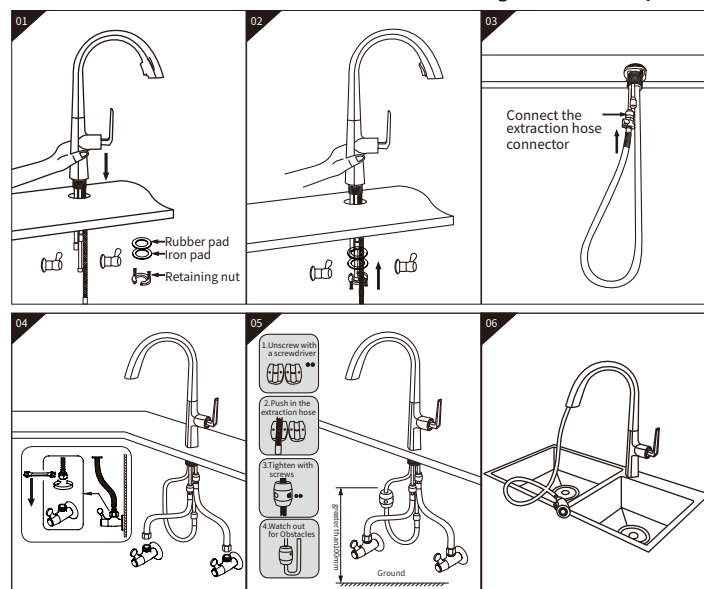
Installation steps

The standard length of the (red and blue) water inlet pipe of the faucet is 600mm. When you embed the water pipe and install the angle valve in the wall, please refer to the dimensions in the schematic diagram above

If you have installed the angle valve and its installation position size is not within the range of our standard size, please contact our business personnel or customer service personnel. We can customize the length of stainless steel braided hose according to your on-site construction size.

03

Installation diagram of kitchen pull tap



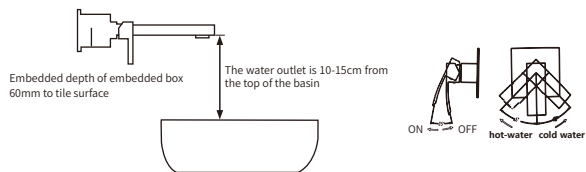
Installation steps:

- Before installation, please make sure there is a drill on the kitchen basin $\Phi 35 - \Phi 40$ mm through-hole, the faucet body assembly is installed into the basin hole, and the bottom of the faucet body must be padded with a sealing ring, as shown in the figure, install the faucet body link from the bottom of the basin.
- As shown in the figure, insert the parts from the bottom of the table into the faucet tube and fix them firmly to prevent shaking.
- Rotate the extraction hose upwards and link it with the extraction hose connector
- Connect the two water inlet hoses on the main body of the faucet to the hot and cold water angle valve respectively. The red water inlet pipe is connected with hot water, and the blue water inlet pipe is connected with cold water.
- Unscrew the gravity ball from the screwdriver and then cover it on the suction hose (the gravity ball cannot touch the ground or other obstacles), and then tighten it with the screwdriver.
- After the faucet is installed, test the water outlet mode first, and then debug the pull mode. If there is no problem with the installation, pay attention to the maintenance in the future!

04



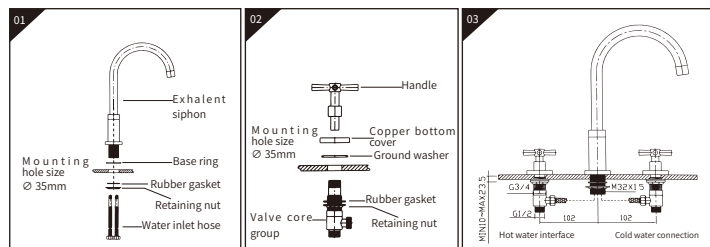
Installation diagram of basin faucet entering the wall



Installation steps

1. Open the product packaging box, check whether the standard parts of the product are complete, and check whether the product is damaged during transportation.
2. Pre-assemble the "embedded double-handle faucet body group" in the wall, and test the sealing of each connection to ensure there is no leakage.
3. Seal the installation opening with decorative tiles on the wall, and reserve the installation position of handle and water outlet.
4. Insert the "decorative panel or decorative ring" into the body, corresponding to the correct position.
5. Lock the "handle group" on the body and screw it firmly.
6. Lock the "outlet pipe" on the body and screw it firmly.
7. After installation, please open the switch for testing and confirm that there is no leakage before use.

Installation diagram of split faucet



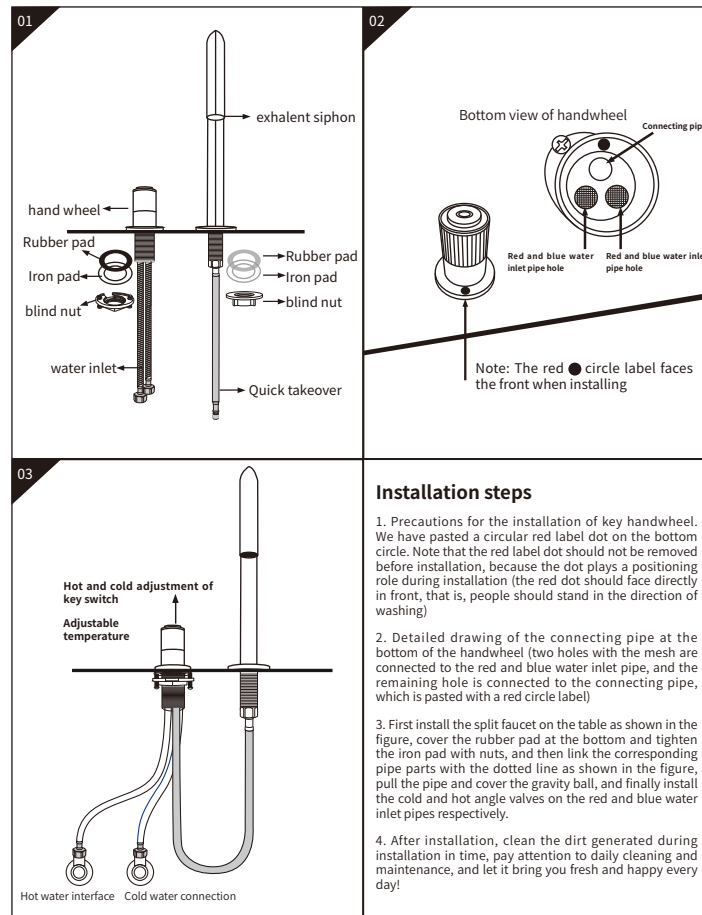
- (1) Put the bottom ring into the bottom of the outlet elbow group
- (2) Connect the inlet hose to the outlet elbow group, connect the left side with hot water and the right side with cold water
- (3) Fix the water outlet elbow group on the basin with the fixing nut.

- (1) Slide the bottom ring into the bottom of the copper bottom cover
- (2) Connect the valve core group with the top fixing nut, and then lock the valve core group on the basin with the bottom fixing nut
- (3) Press the handle into the bottom of the valve core group.

- (1) After the outlet elbow group is fixed with the valve core group, connect the inlet hose with the valve core group according to the left figure
- (2) The left valve core is connected to the hot water pipe, the right valve core is connected to the cold water pipe, and the installation can be completed by checking whether the faucet is fixed.

05

Installation diagram of split two-piece washbasin faucet



Installation steps

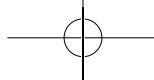
1. Precautions for the installation of key handwheel. We have pasted a circular red label dot on the bottom circle. Note that the red label dot should not be removed before installation, because the dot plays a positioning role during installation (the red dot should face directly in front, that is, people should stand in the direction of washing)

2. Detailed drawing of the connecting pipe at the bottom of the handwheel (two holes with the mesh are connected to the red and blue water inlet pipe, and the remaining hole is connected to the connecting pipe, which is pasted with a red circle label)

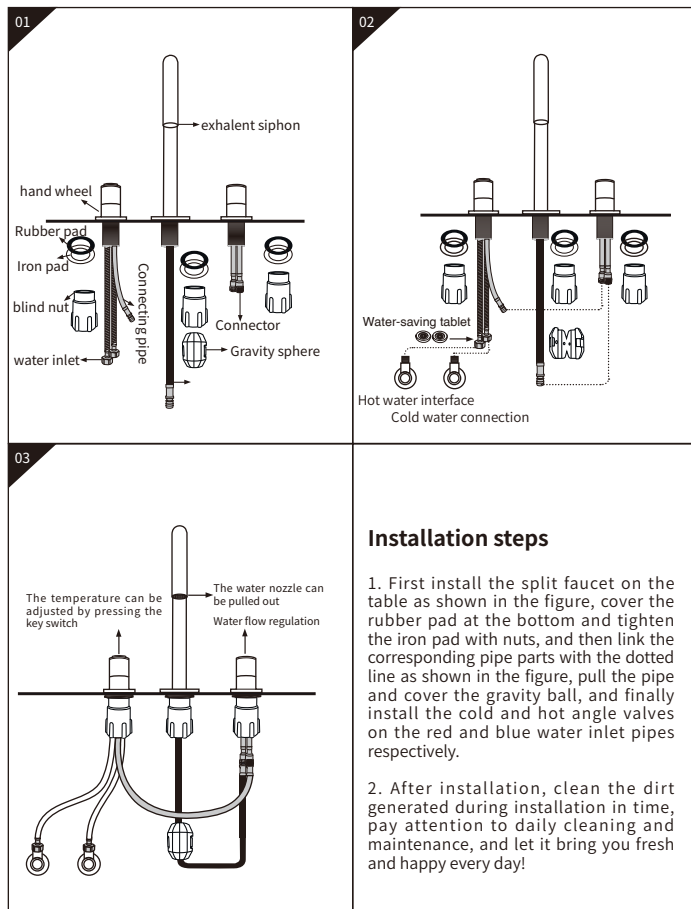
3. First install the split faucet on the table as shown in the figure, cover the rubber pad at the bottom and tighten the iron pad with nuts, and then link the corresponding pipe parts with the dotted line as shown in the figure, pull the pipe and cover the gravity ball, and finally install the cold and hot angle valves on the red and blue water inlet pipes respectively.

4. After installation, clean the dirt generated during installation in time, pay attention to daily cleaning and maintenance, and let it bring you fresh and happy every day!

06

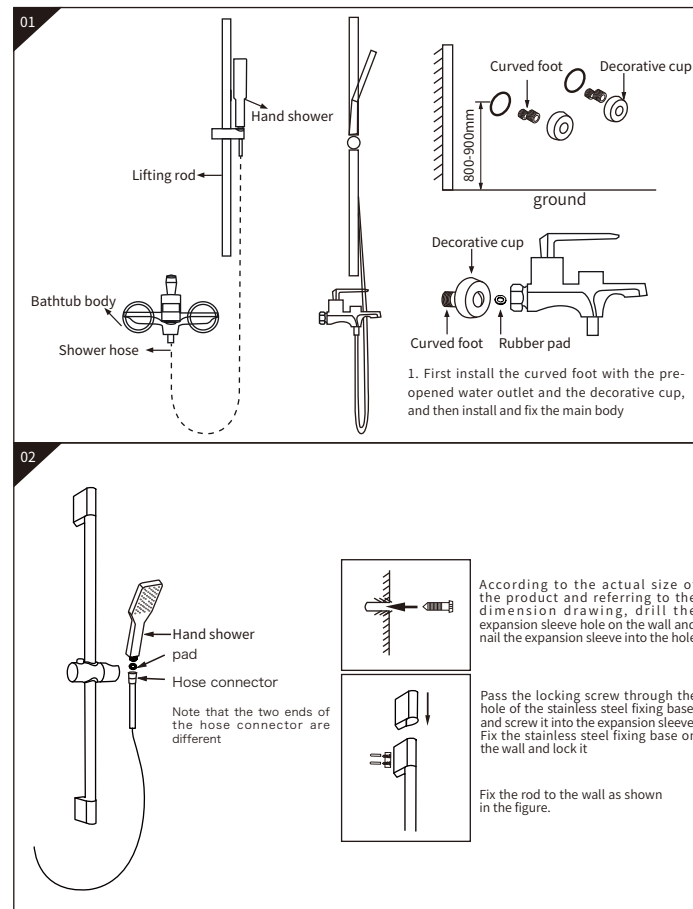


Installation diagram of split three-piece washbasin faucet

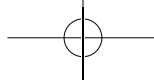


07

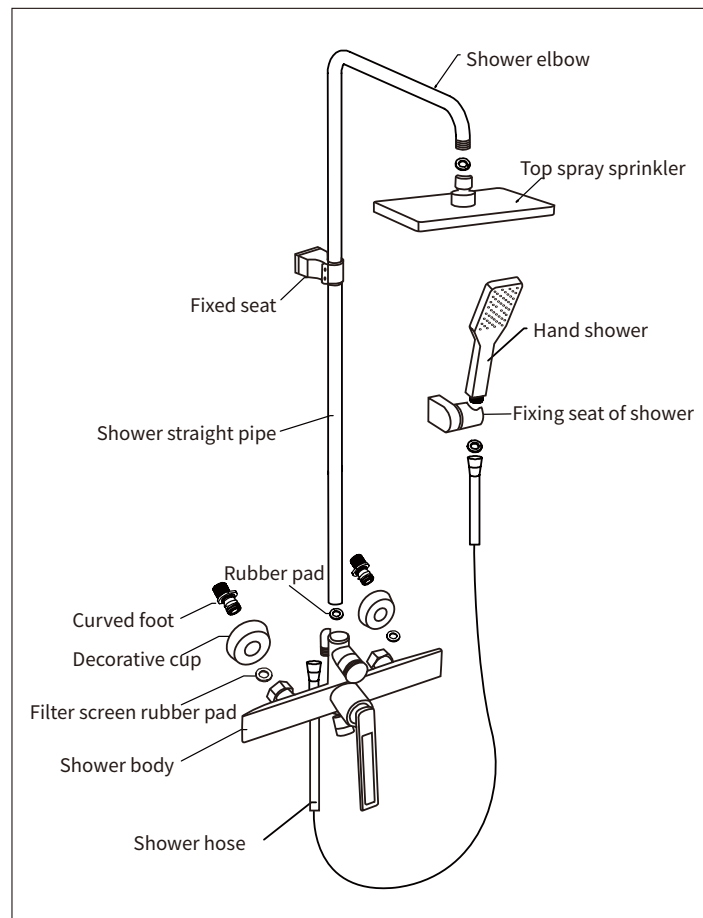
Installation diagram of split two-piece washbasin faucet



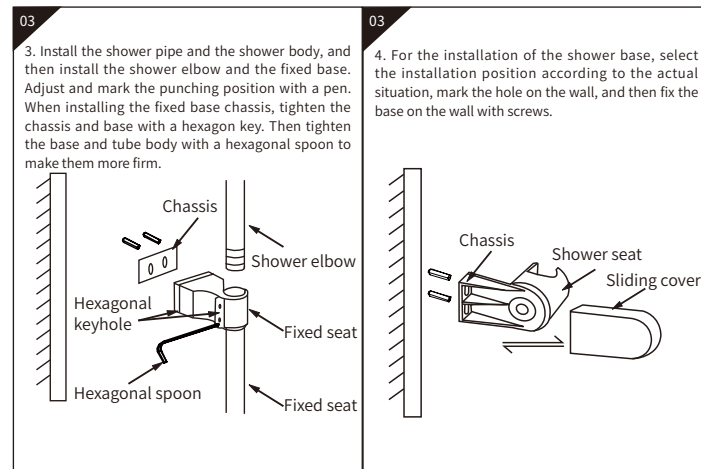
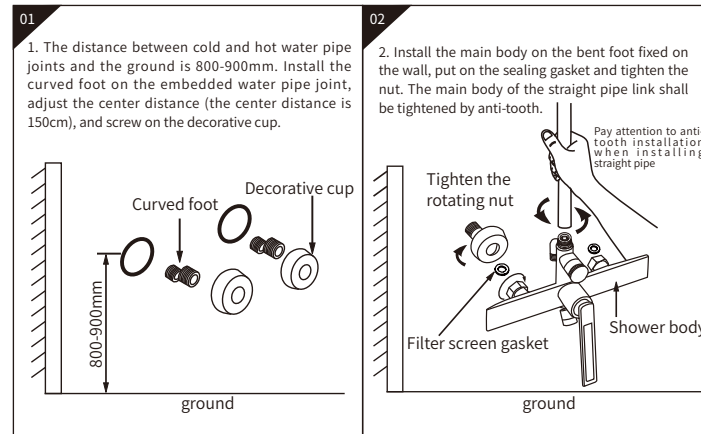
08



Installation diagram of three-function shower



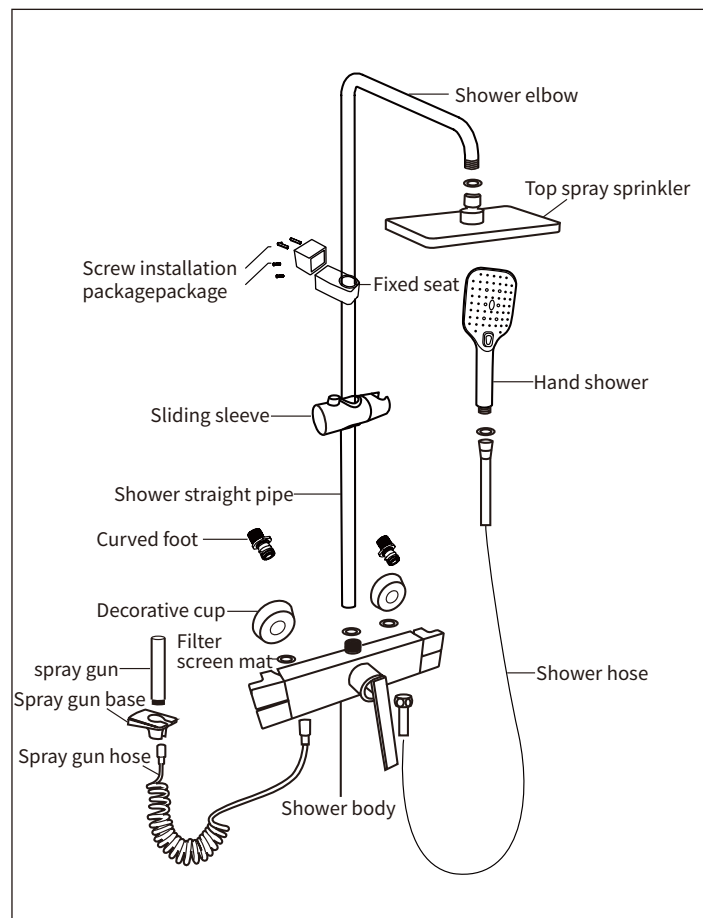
09



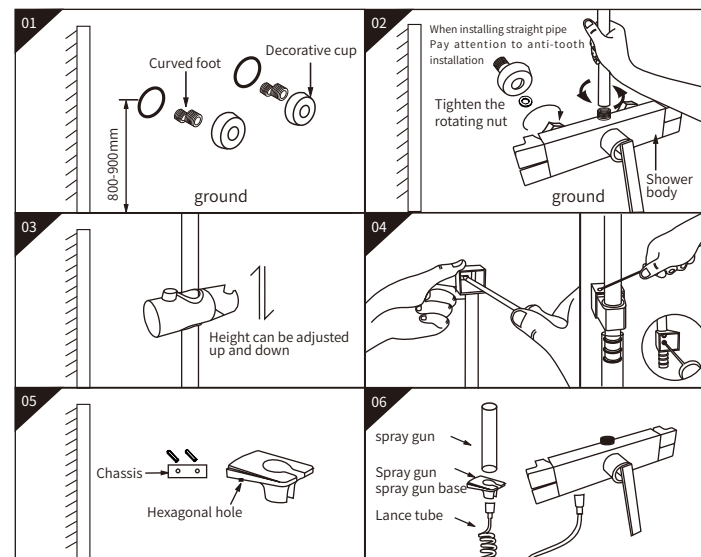
10



Installation diagram of four-function shower



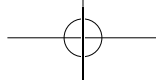
11



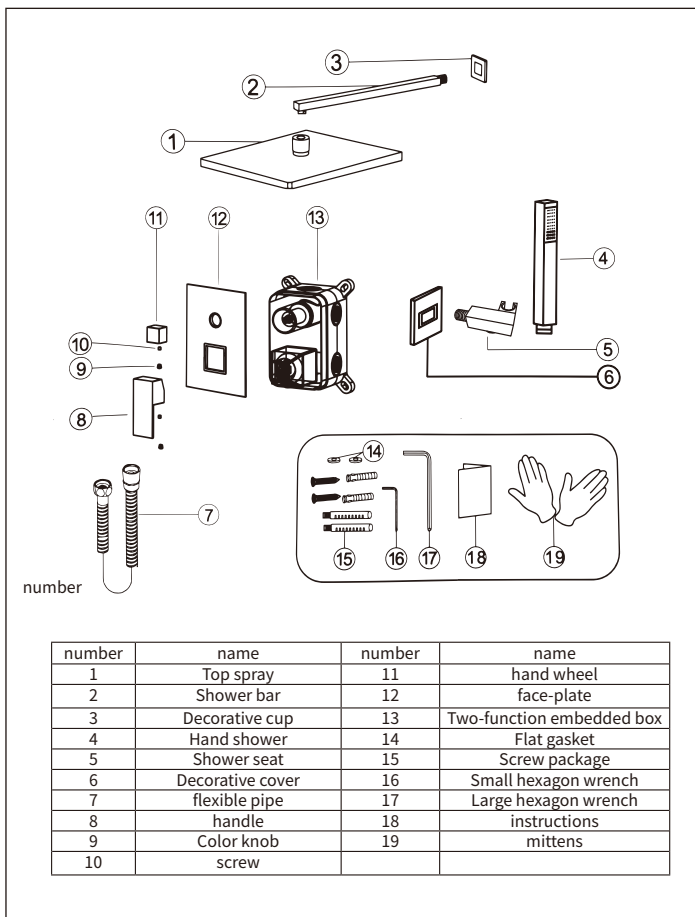
Installation steps

1. The distance between cold and hot water pipe joints and the ground is 800-900mm. Install the curved foot on the embedded water pipe joint, adjust the center distance (the center distance is 150cm), and screw on the decorative cup.
2. Install the main body on the bent foot fixed on the wall, put on the sealing gasket and tighten the nut. The main body of the straight pipe link should be installed in reverse direction.
3. First put the shower slide sleeve into the shower straight pipe, the slide sleeve can adjust the height up and down, then put the shower straight pipe onto the shower body, and then install the shower straight pipe fixing seat.
4. Adjust the fixed base, mark the punching position with a pen, and install the screws. When installing the fixed base chassis, tighten the chassis and the base with a hexagonal key. Install the fixed base, insert the shower elbow, and then tighten the base and pipe body with a hexagonal spoon to make it more secure.
5. Select a suitable position for the spray gun base and mark it with a pen for punching installation (it is recommended that the appropriate position is that the left side of the shower body is the same as or higher than the main body). The specific position can be installed according to its own.
6. Install the top sprinkler on the elbow head, connect the sprinkler hose to the shower body and the hand-held sprinkler, and connect the spray gun pipe to the main body and the spray gun, and conduct water commissioning and inspection.

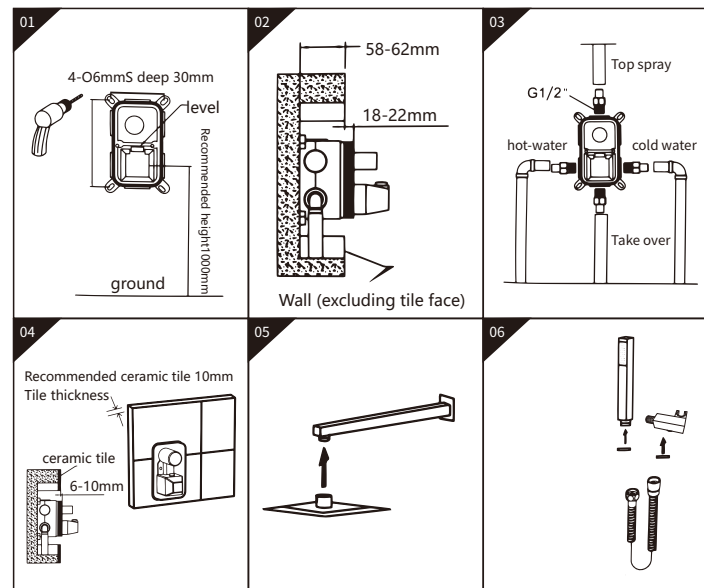
12



Installation diagram of concealed shower



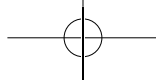
13



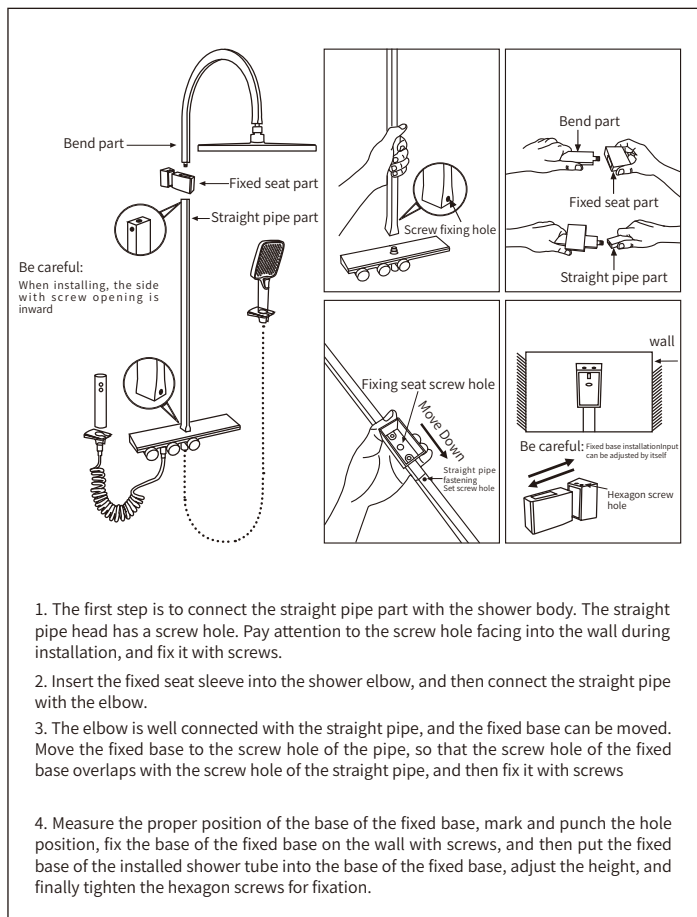
Installation steps

- Installation steps: 1. Install the rubber particles on the wall, and then install the shower faucet.
- Fix the main body on the wall with screws and check whether the installation size meets the requirements.
- Install cold and hot water inlet pipe, sprinkler pipe and sprinkler seat water pipe.
- Install the main body and inlet and outlet pipes, open the main valve, and check whether the product functions normally. (After the test, install the protective cover) After the tiles are laid, check whether the protruding size of the edge of the embedded box is appropriate.
- Rotate the shower pipe onto the pipe to connect the top spray to the shower pipe
- Screw the thread into the water pipe in the wall, screw the main thread into the thread, use a hexagon wrench to rotate and fix the valve body, and link the hand-held hose

14



Installation diagram of square tube



15

Product warranty card

Thank you for purchasing our products

The company provides the following limited liability guarantee to the consumer users who purchase the bibcock

1. At any time within one year of your purchase of our bibcock, our company will repair or replace it with the same model of product for any fault caused by product quality
2. If the product is damaged due to improper installation or use by the user, the company will not replace it, but will repair it. The cost of the replaced parts will be charged.
3. This limited liability guarantee is only applicable to the original consumer users who purchase the company's leading products for residential and non-commercial purposes. For questions or inquiries about the use and maintenance of faucets, please contact our company or local dealers, explain the model and product problems of faucets, and attach the purchase certificate and this card.

warn

- Once the faucet heart is disassembled, it will lose its effect. Do not disassemble it by yourself
- Before installation, please be sure to remove impurities and sediment in the water pipe to avoid blocking the tap and affecting the water outlet function



16