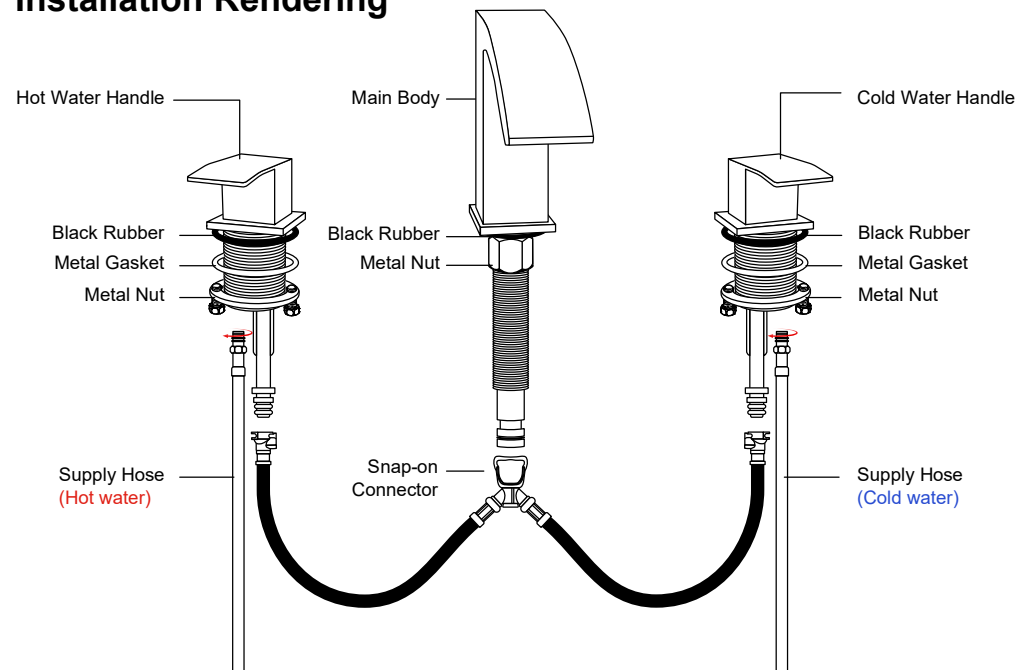
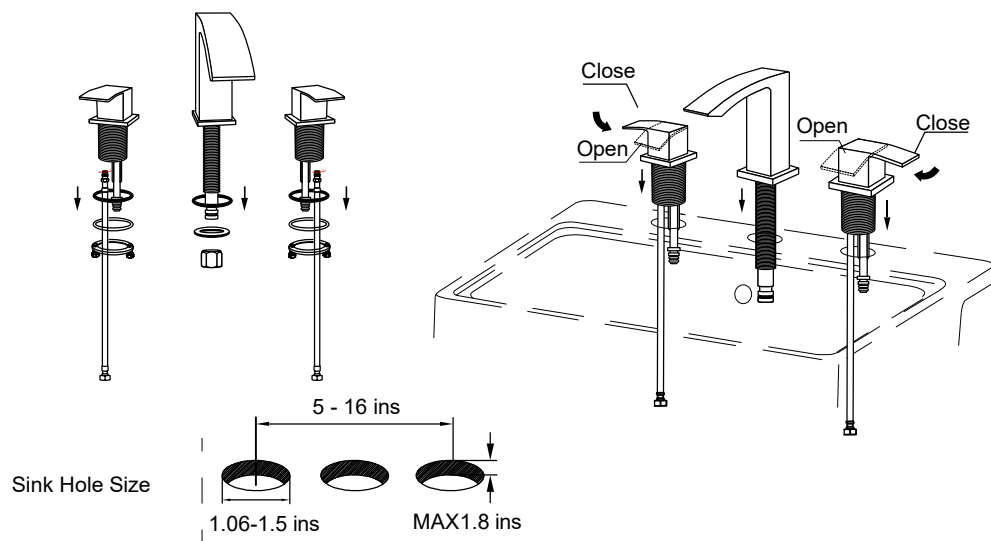


Installation Rendering



Notice:

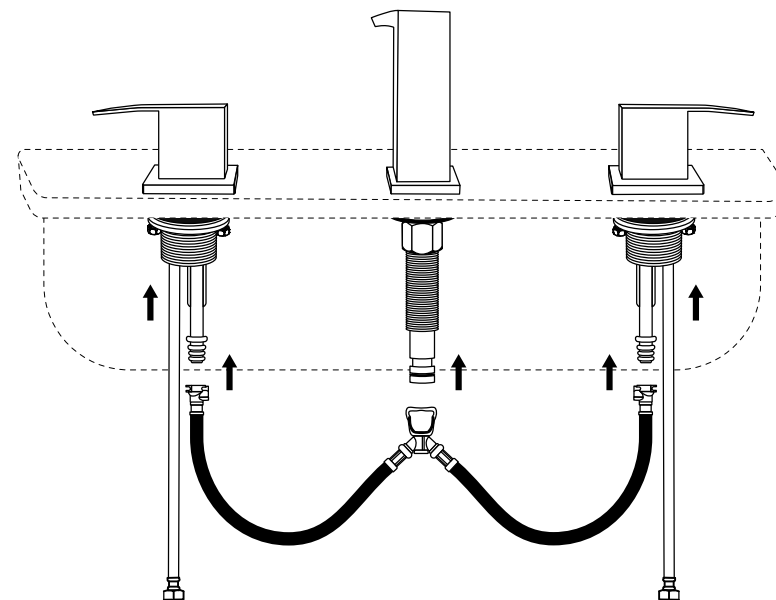
Must make sure all the pre-installed water hoses are tightened while installing. If not, tighten clockwise.



- 1.Remove the rubber rings and metal nuts from the main faucet and the hot and cold water faucets
- 2.Insert the faucet through the basin hole.

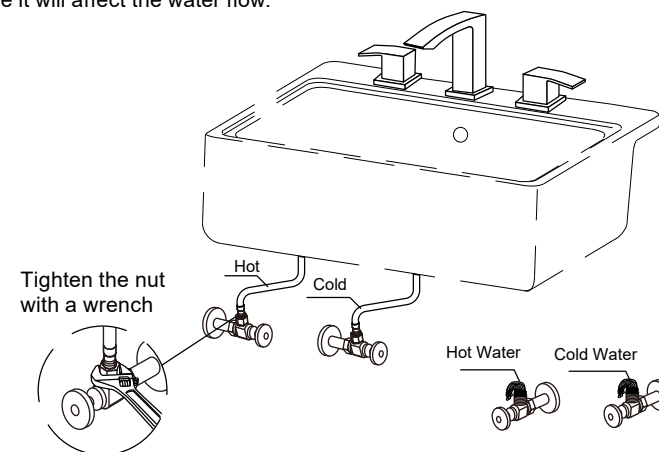
Notice:

Please note the hot(Left) and cold(Right) handles need to turn to their respective sides to ensure they are closed.



Connect the faucet and handle hoses with the snap-on connector.

Notice: When you hear a "click", it means the snap-on connector installation is successful.



1. Open the angle valve to discharge the sewage.
2. Tighten the hot and cold supply water hoses on the angle valve.
3. Open the hot & cold handles to check if the faucet is working properly or any leaks.

Installation finished.